



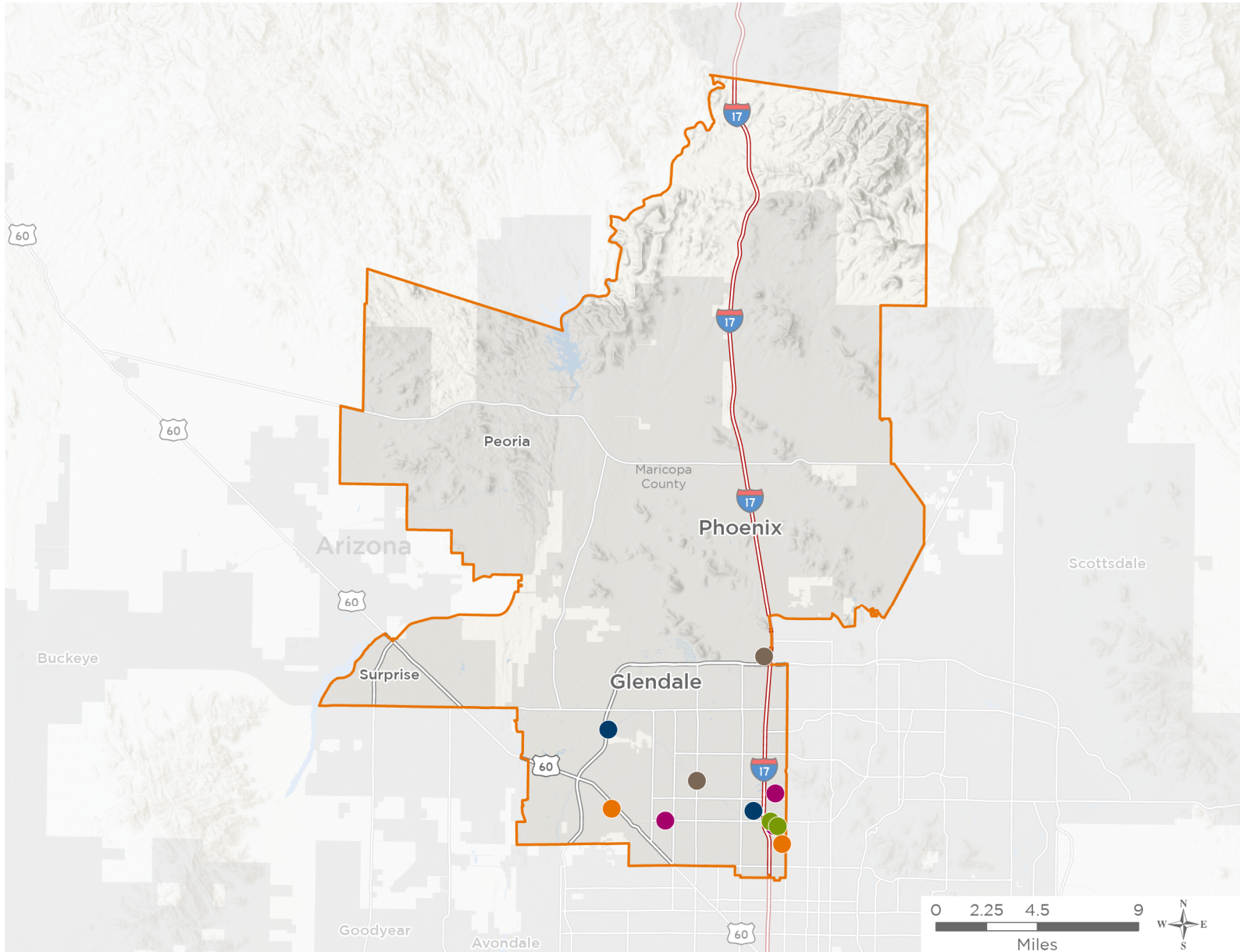
NATIONAL ASSOCIATION OF
Community Health Centers®

Representative Abraham Hamadeh

119th United States Congress

Arizona's 8TH Congressional District

The 5 federally-funded health center organizations with a presence in Arizona's 8th Congressional District leverage **\$14,485,404** in federal investments to serve **249,952** patients.



12

**NUMBER OF DELIVERY SITES
IN CONGRESSIONAL DISTRICT**

- Federally-funded Delivery Site (each color represents one organization)
- Health Center Program Look-Alikes
- 119th Congressional District Boundaries
- County Boundaries
- Interstates
- Highways
- Major Roads
- Populated Places

Notes | Delivery sites represent locations of organizations funded by the federal Health Center Program. Health Center Program Look-Alikes are community-based health care providers that meet the requirements of the HRSA Health Center Program, but do not receive Health Center Program funding. Some locations may overlap due to scale or may otherwise not be visible when mapped. Federal investments represent the total funding from the federal Health Center Program to grantees with a presence in the state in 2023.

Sources | Federally-Funded Delivery Site Locations and Health Center Program Look-Alikes: data.HRSA.gov, November 2024. Health Center Patients and Federal Funding | 2024 Uniform Data System, Bureau of Primary Health Care, HRSA.



12

**NUMBER OF DELIVERY SITES IN
CONGRESSIONAL DISTRICT**

(main organization in bold)

● ADELANTE HEALTHCARE INC

Adelante Healthcare Peoria | 15525 North 83rd Avenue, #104 Peoria, AZ 85382

Adelante Healthcare West Phoenix | 9610 N Metro Pkwy W Phoenix, AZ 85051-1402

● MARICOPA COUNTY SPECIAL HEALTH CARE DISTRICT

Valleywise Community Health Center- North Phoenix | 2025 West Northern Avenue Phoenix, AZ 85021

Valleywise Comprehensive Health Center-Peoria | 8088 West Whitney Drive Peoria, AZ 85345

● NATIVE HEALTH

NATIVE HEALTH I-17 Clinic | 2423 W Dunlap Ave, Ste 140 Phoenix, AZ 85021-5818

NATIVE HEALTH West 8800 | 8800 N 22nd Ave Phoenix, AZ 85021-4258

● NEIGHBORHOOD OUTREACH ACCESS TO HEALTH

Copperwood Health Center | 11851 N 51st Ave STE B110 Glendale, AZ 85304-2823

Copperwood II Health Center | 11851 N 51st Ave STE F140 Glendale, AZ 85304-2847

Venado Valley Health Center | 20440 N 27th Ave Phoenix, AZ 85027-3240

● TERROS INC

23rd Avenue Health Center | 8804 N 23rd Ave STE A1 Phoenix, AZ 85021-4160

Desert Cove | 10844 North 23rd Avenue Phoenix, AZ 85029

TERROS Glendale Care Clinic | 6153 W Olive Ave Glendale, AZ 85302-4505